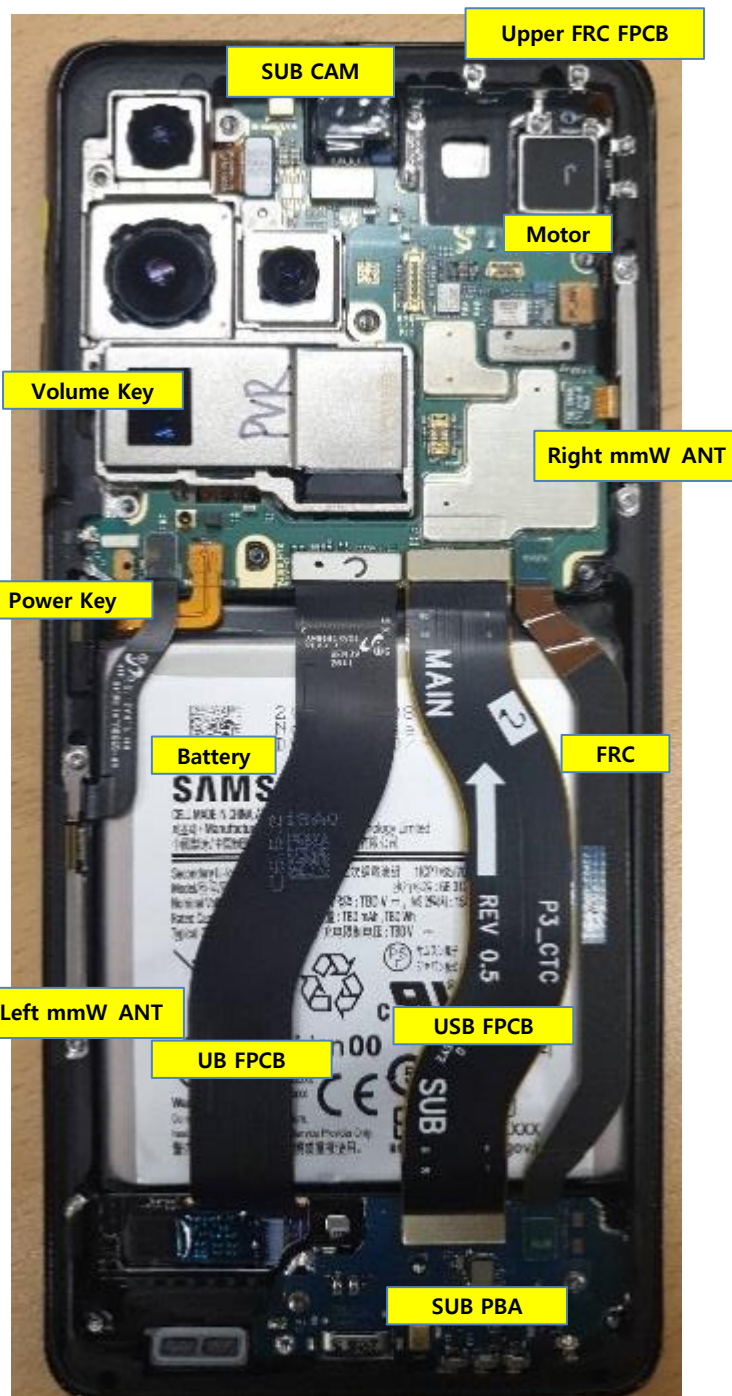

7. Level 2 Repair

7-1. Components on the Rear Case



7. Level 2 Repair

7-2. Pre-requisite

	
Tweezers / Disass'y Stick / Screw Driver	Anti-static Gloves
	
Anti-static Mat	AOD
	
Ethyl Alcohol	Cotton Swab

7. Level 2 Repair

7-3. Parts which must be changed after repair

BOM description & part code	KIT CODE	Image	Remarks
Back Glass Outside tape [GH81-20086A]	GH82-24597A		Left items must be changed to the new one in case of disassembly.
WPC Flash sealing Tape [GH02-22161A]			
Mic Sealing Tape [GH02-07406A]			
Sponge 3rd MIC tape [GH02-22451A]			
Screws for Rear(13) & CAM bracket top(1) [6001-003427]		3.5mm Silver screw (Blue resin) 	
Screws for Sub-PBA(3) [6001-003428]		3.5mm Silver screw (Yellow resin) 	
CAM Inner Deco(Sus) CAM deco lower [GH98-46263A]			

7. Level 2 Repair

7-4. Disassembly

1

1) Put the device in the AOD jig. Set the AOD condition

- SOC 68%↓: Upper 70°C/ Lower 60°C 5min
 - SOC 68%↑: Upper 60°C/ Lower 60°C 5min
- 2) Disassemble the Back Glass using the AOD.



2

Detach the Back Glass.

- Detach the left side of Back glass.



※ Caution
Be care of scratch.

※ Caution
Be care of scratch.

3

1. Heating the attachment surface of Back Glass and Cam Deco Lower with AOD.
2. Disassemble Cam Deco Lower/Back Glass.



4

Disassemble Back Glass Assy.

- ※ Cam Inner Deco is not recycled.



※ Caution
Be care of Rear damage.

※ Caution
Be care of Rear damage.

7. Level 2 Repair

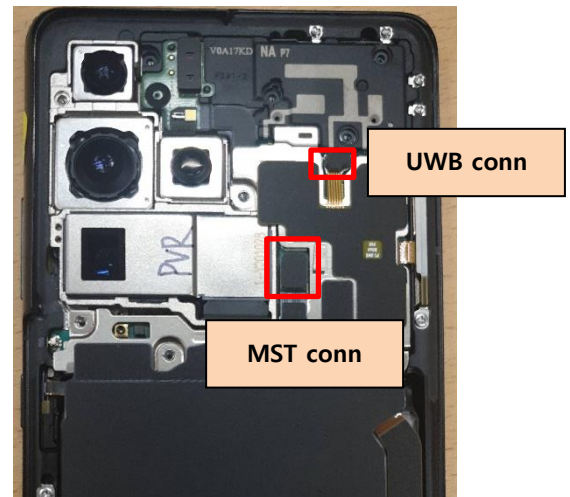
5

Unscrew 14 Point and disassemble SIM Tray from device.



6

Disassemble Rear mid ASSY
(Before disassemble Rear mid ASSY, MST conn and UWB conn disassemble first.)

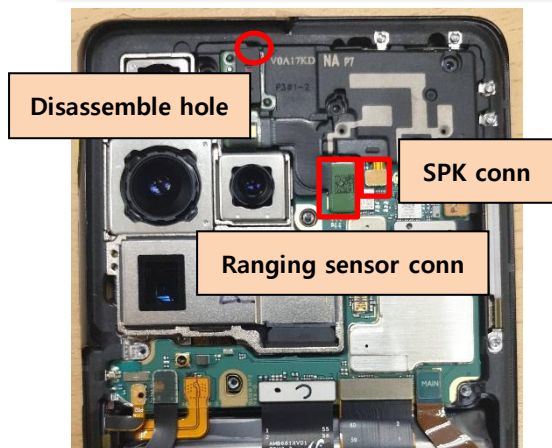


※ Caution
Be care of Rear damage.

※ Caution
1) Be care of scratch.
2) Be care of Rear and connector damage.

7

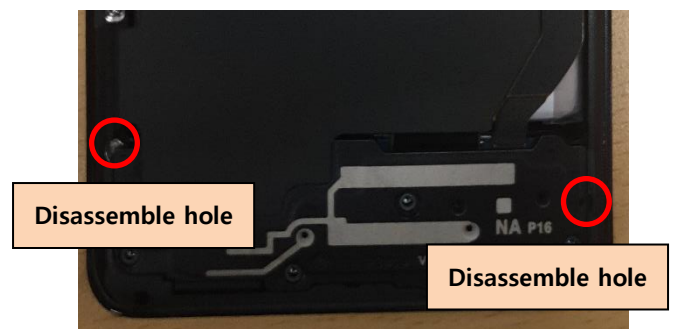
Disassemble Rear of top side.
(Before disassemble rear of top side, Ranging sensor conn and SPK conn disassemble first, and when you disassemble rear of top side, use disassemble hole)



※ Caution
1) Be care of scratch.
2) Be care of Rear and connector damage.
3) Be careful not to damage the PBA.

8

Disassemble Rear of bottom side.
(Use disassemble hole left and right side of Rear to detach it)



※ Caution
1) Be care of scratch.
2) Be care of Rear and connector damage.
3) Be careful not to damage the PBA.

7. Level 2 Repair

9

Disassemble 12 Point connector of PBA.

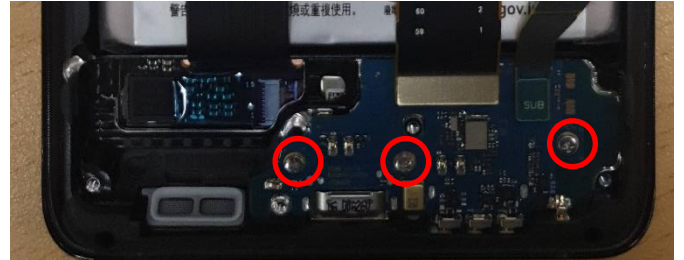


※ Caution

- 1) Be care of scratch.
- 2) Be care of connector/cable damage.

10

Unscrew 3 Point in SUB PBA 3 Point.



※ Caution

- 1) Be care of several kinds of damage.
- 2) Be care of SUB PBA damage.

11

Detach Main and Sub PBA
(Before Detach main PBA disassemble first.)

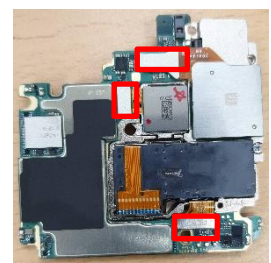
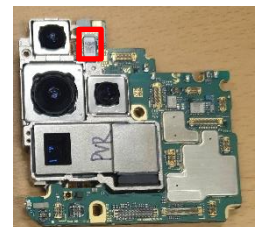
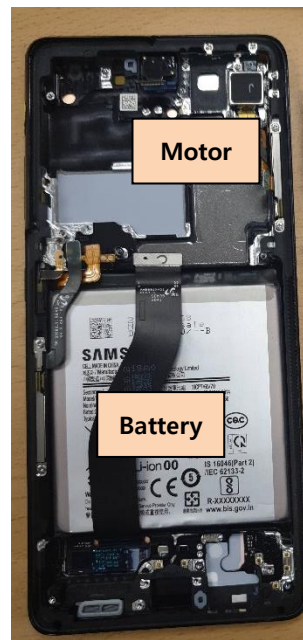


※ Caution

Be care of several kinds of damage.

12

Detach other components.



※ Caution

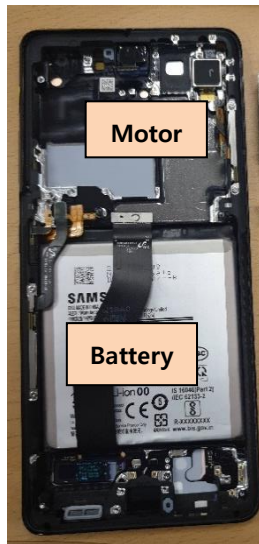
Be care of several kinds of damage.

7. Level 2 Repair

7-5. Assembly

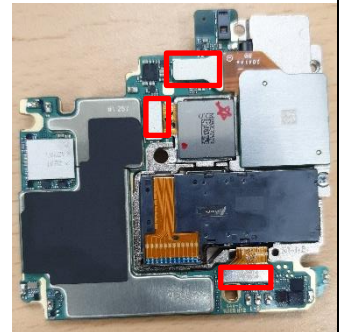
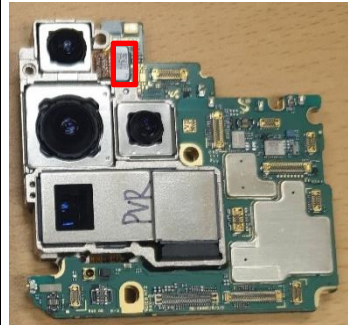
1

Attach components on Front.
(Motor, Battery)



2

Attach Main CAM on PBA.



※ Caution

Be care of FPCB, components damage and tilt.

※ Caution

Be care of press power/time.

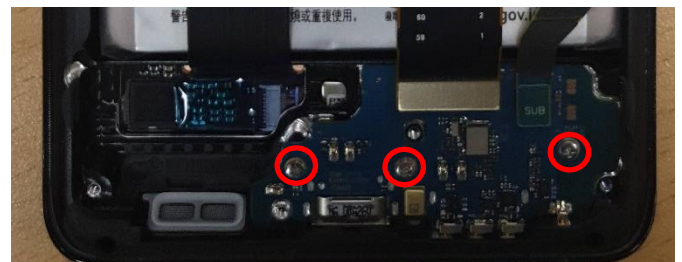
3

Assemble Main PBA and Sub PBA to Front case.



4

Screw 3 points in SUB PBA.
- Torque : $1.30 \pm 7\%$ Kgf.cm



※ Caution

1) Be care of scratch and REAR damage.
2) Check for contact damage.(red area).

※ Caution

Be care of chip damage nearby screw point.

7. Level 2 Repair

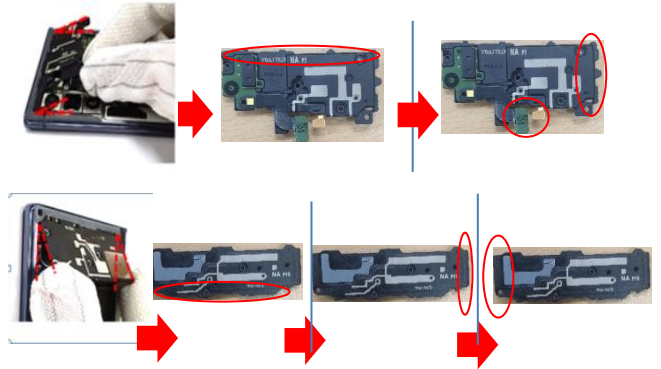
5

Assemble battery connect and the other connectors(12 Point).



6

Assemble the TOP and BOTTOM REAR in sequence. also Ranging Sensor and SPK conn



※ Caution

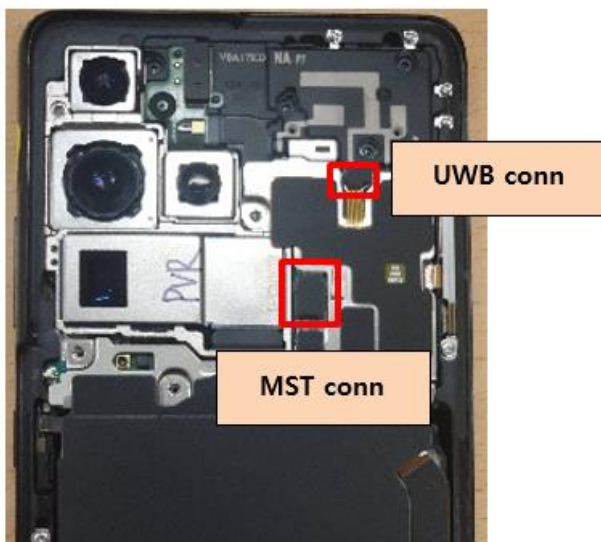
Be care of press power/time.

※ Caution

Be care of scratch and REAR damage.

7

MID REAR ASSY assemble.
(Before Mid Rear ASSY assemble, MST conn and UWB conn assemble first)



8

Screw insertion 14 Point and assembling SIM socket .
- Torque : $1.35 \pm 7\%$ Kgf.cm



※ Caution

1) Be care of scratch and REAR damage.
2) Be care of press power/time.

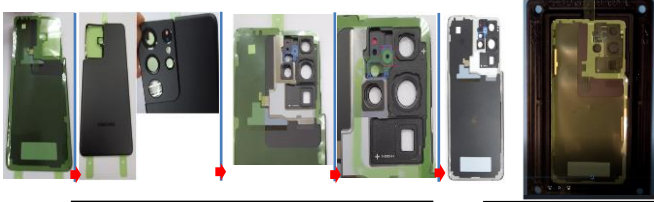
※ Caution

Be care of Rear damage.

7. Level 2 Repair

9

1. Attach SVC Back Glass Tape to match the Back Glass shape with pressing pad
2. Attach the CAM Deco to match the shape
3. CAM Deco lower of Back Glass Tape is removed and CAM Deco lower is attached
4. Attach 3rd Mic sponge
※ Attach 3rd Mic Hole so that it is not covered
5. Attach the back-glass tape on the Rear.
- Gently press all adhesive parts of tape using disassembly stick or hands.



Back Glass sequence

Pressing pad

10

Attach the back glass on the REAR side.

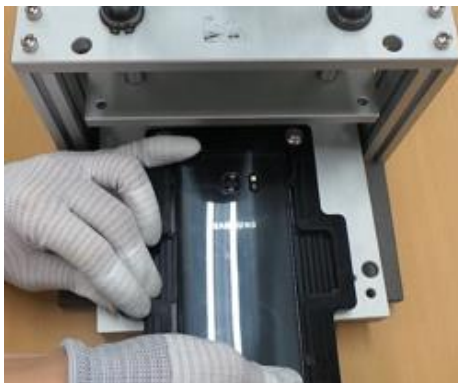


※ **Caution**
Be care of scratch and tilt.

※ **Caution**
Be care of scratch and tilt.

11

Press Back Glass.
Pressing force & Time : 1 N / 1 Minute
SIM Tray must be separated before pressing the backglass or the OCTA.



※ **Caution**
Be care of scratch and tilt.